

Code:

6810-54

Grade: HH

Cleaning Code: S

Introduction Date: 10/01/2024

Fabric Content: 55% LINEN 45% COTTON

Width: 50

Horizontal Repeat: 25.1

Vertical Repeat: 29.5

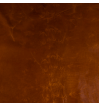
Material Description: An all-over floral embroidery rendered in vibrant colors and detailed textures. The overall effect is both delicate and striking, often evoking a sense of nature's beauty.



Correlating Fabric:



8926-54



L6665-93