

Code:

8814-50

Grade: EE

Cleaning Code: S

Introduction Date: 04/01/2024

Fabric Content: BASE=50% COTTON 35% VISCOSE 15% LINEN EMBROIDERY=

Width: 51

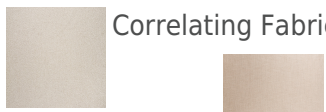
Horizontal Repeat: 8.5

Vertical Repeat: 9.3

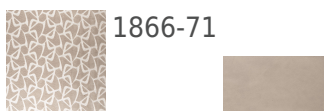
Material Description: A large scale contemporary bargello that has been embroidered and printed afterwards for a unique handmade look.



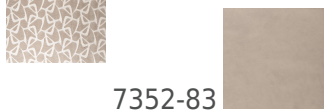
Correlating Fabric:



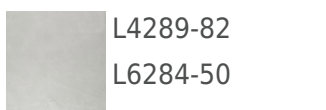
1420-71



1866-71



7352-83



L4289-82

L6284-50

